



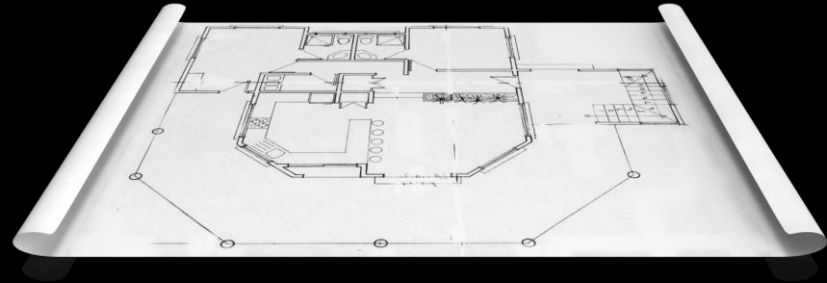
Town of Shelburne

Asset Management Plan

June 2022 Update



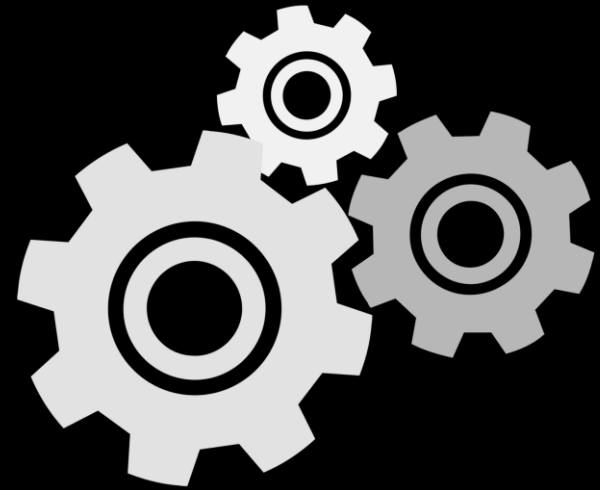
- 1) Introduction
- 2) Definitions
- 3) Key Statistics
- 4) Limitations
- 5) Next Steps
- 6) Questions





What is asset management?

- Administration of capital assets
- Minimize cost
- Maximize value
- Level of service
- Lifecycle strategy
- Understanding risk





What is an asset management plan?

- Planning tool
- Reviews state of infrastructure
- Outlines management approach
- Not an exhaustive strategy

How is it used?

- Decision-making
- Alongside related documents





Ontario Regulation 588/17 Asset Management Planning for Municipal Infrastructure

	Reporting Document	Due Date
	Strategic Asset Management Policy	July 1, 2019
→	Asset Management Plan Update (Phase 1)	July 1, 2022
	Asset Management Plan Update (Phase 2)	July 1, 2024
	Asset Management Plan Update (Phase 3)	July 1, 2025

- 1) Endorsed by the executive lead of the municipality
- 2) Approved by a resolution passed by the municipal council



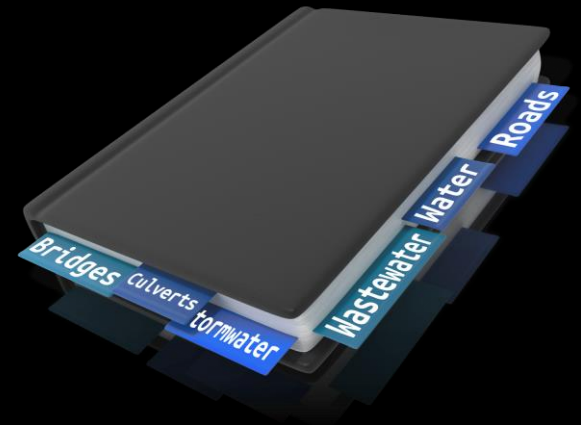
Scope of Asset Management Plan Update (Phase 1)

- Core municipal infrastructure assets
 - Bridges
 - Culverts
 - Roads
 - Stormwater
 - Wastewater
 - Water
- Quantity
- Average age
- Replacement cost
- Condition
- Level of service
- Performance
- Lifecycle activities
- Population and economic change



Asset Management Plan, June 2022 Update

- Context, definitions, methodology
- Asset category by section
 - Quantity and Replacement Cost
 - Useful Life and Average Age
 - Condition
 - Level of Service
 - Performance
 - Lifecycle Activities
 - Recommendations
- Population and economic change





General Asset Management Terminology

- 1) Asset Inventory
 - Collection of structured asset data
- 2) Category
 - Group of related assets
- 3) Segment
 - Sub-category of assets within a category



Ontario Regulation 588/17 Reporting Terminology

- 1) Quantity
 - Number of assets
- 2) Replacement Cost
 - Cost-per-unit
 - Inflated historical cost
- 3) Useful Life
 - Estimated service life
 - Standardized by segment
- 4) Average Age
 - Number of years in service





Ontario Regulation 588/17 Reporting Terminology

- | | |
|---|---|
| <p>5) Condition</p> <ul style="list-style-type: none">▪ Rating of overall condition▪ Field inspections▪ Age-based assumptions | <p>8) Lifecycle Activities</p> <ul style="list-style-type: none">▪ Maintenance▪ Rehabilitation▪ Interval▪ Cost |
| <p>6) Level of Service</p> <ul style="list-style-type: none">▪ Scope▪ Performance | |
| <p>7) Performance</p> <ul style="list-style-type: none">▪ Key performance indicators▪ Measurable | |



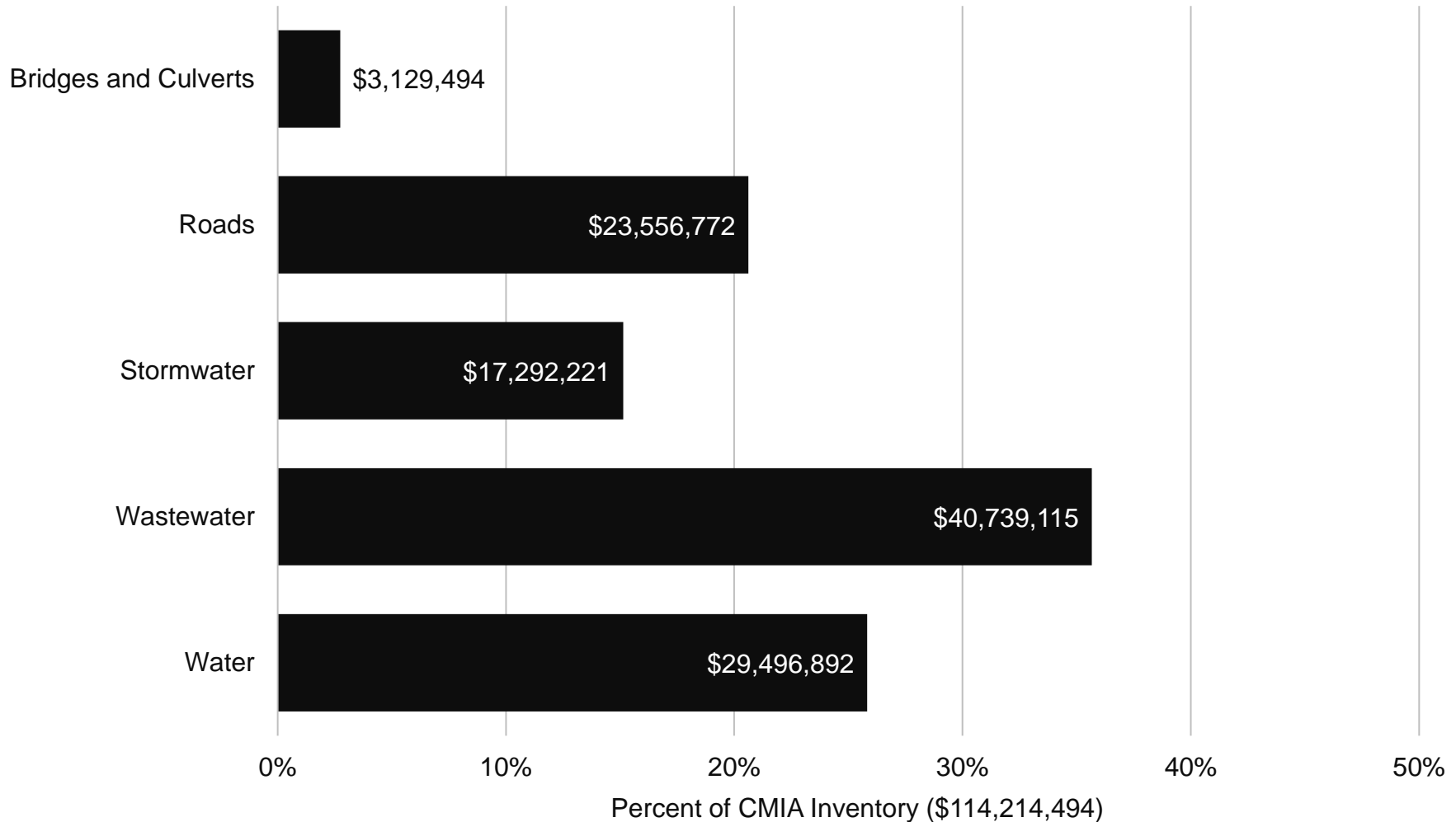
Replacement Cost by Category

Asset Category	Replacement Cost	Cost Year
Bridges and Culverts	\$3,129,494	2020
Roads	\$23,556,772	2020
Stormwater	\$17,292,221	2021
Wastewater	\$40,739,115	2021
Water	\$29,496,892	2021
Total (CMIA)	\$114,214,494	-

Core Municipal Infrastructure Asset (CMIA)



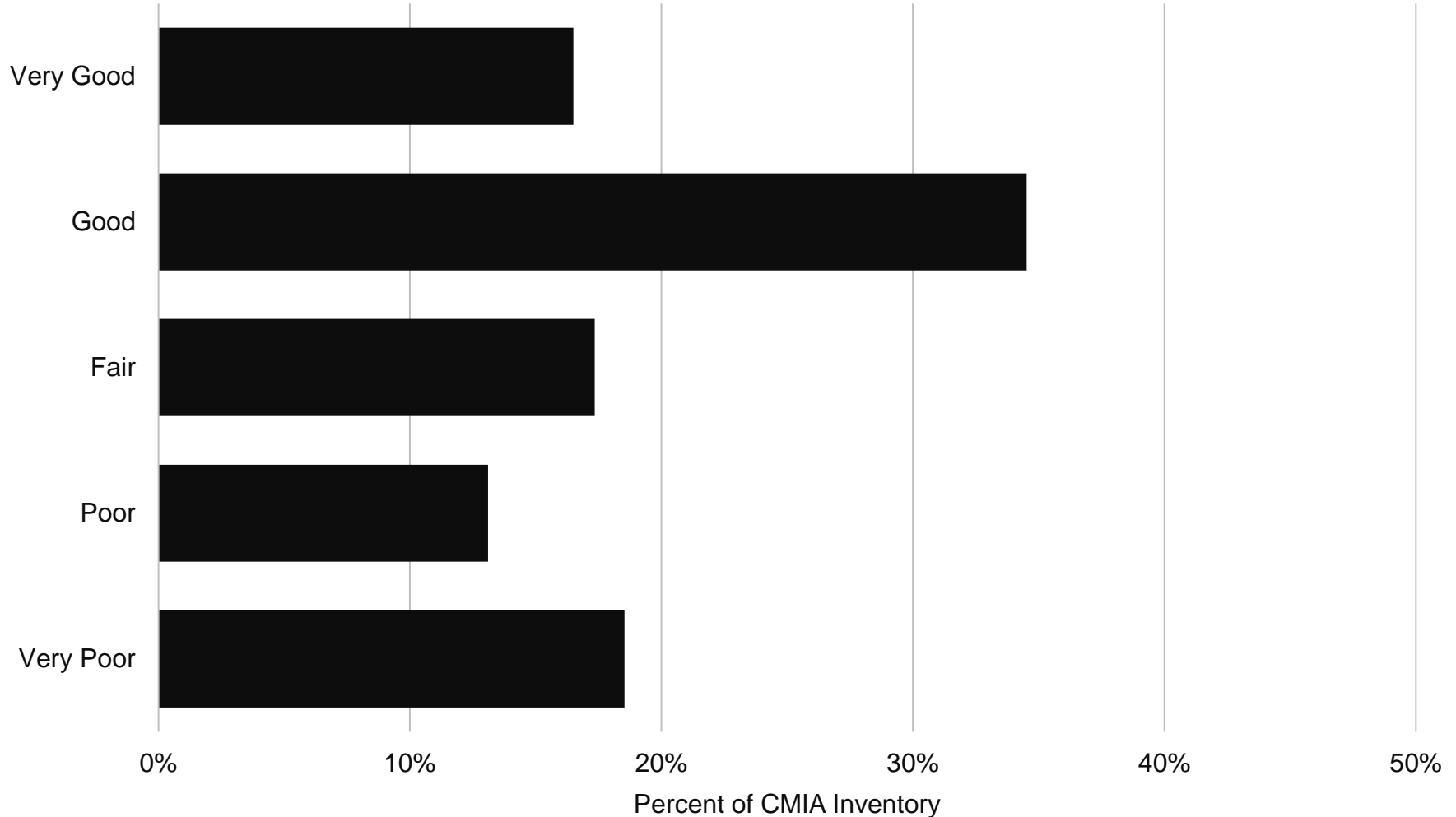
Asset Category vs CMIA Inventory Replacement Cost



Key Statistics



CMIA Inventory Condition Rating

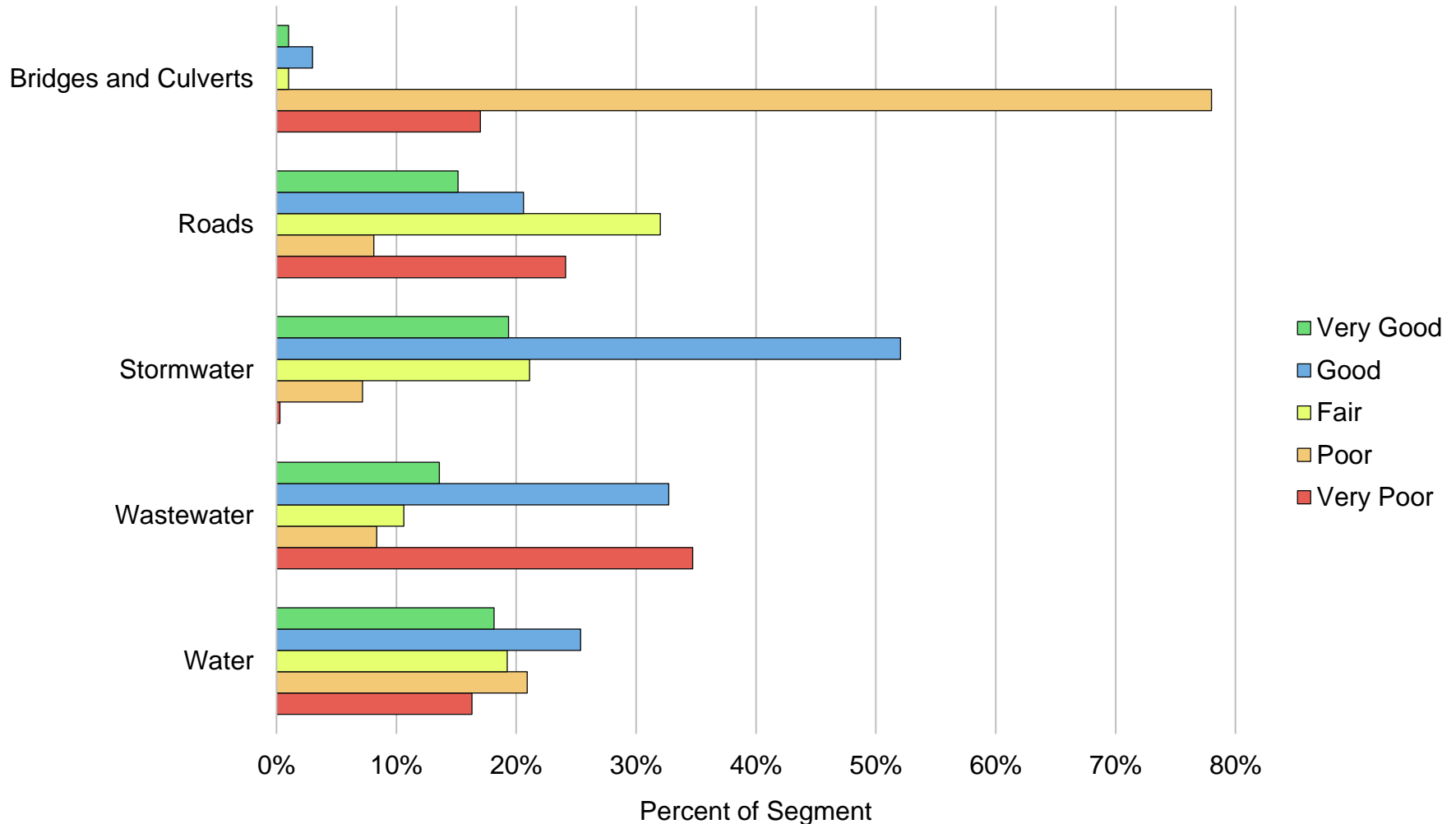


Key Statistics

Town of Shelburne



Asset Category by Condition Rating





What are the limitations?

- Data availability
- Data integrity
- Material and labour costs

How are these addressed?

- Identification of shortfalls
- Controlled and phased improvement
- Continuous review





Ontario Regulation 588/17 Asset Management Planning for Municipal Infrastructure

Reporting Document	Due Date	
Strategic Asset Management Policy	July 1, 2019	✓
Asset Management Plan Update (Phase 1)	July 1, 2022	✓
Asset Management Plan Update (Phase 2)	July 1, 2024	←
Asset Management Plan Update (Phase 3)	July 1, 2025	



Scope of Asset Management Plan Update (Phase 2)

- All municipal infrastructure assets
- Quantity
- Average age
- Replacement cost
- Condition
- Level of service
- Performance
- Lifecycle activities
- Population and economic change



Shelburne's Asset Management Program

- 1) Prepare asset categories for the Phase 2 update
- 2) Deploy recommended improvements to the CMIA inventory
- 3) Evaluate program for suitability



Questions



Town of Shelburne
Asset Management Plan
June 2022 Update

